

Product Name: Lockerpod

### Product Description:

Lockerpods are manufactured from recyclable low density polyethylene (Think salt bins – extra tough!). The LDPE is UV treated and will not deteriorate or discolour over time. LDPE is also very unreactive and resistant to graffiti!

Lockerpods features double security. The door hasps are made of protected Stainless steel tabs, drilled to accept padlocks. Internally it is designed so that a ground anchor can be installed to accept a D Lock or chain for additional security.

Lockerpods are weatherproof so your bike is kept clean and dry and there's space to store your helmet and other bike kit safely with your bike.

Lockerpods attractive design means it will look good anywhere. At the front of your property (or any other location you would like to see one!) Where it is most convenient for storing your bike.

No need to carry your (possibly muddy and wet) bike round, or worse still, through your house.

Leave all your bike essentials with your bike in this robust cycle locker.

Lockerpods are manufactured simply as a body and door and is supplied fully assembled and complete.

Absolutely no assembly required.

Each unit comes with 4 Rawl Bolt base fixings and instructions for installation. Other colours are available on request.

### Additional Information:

Weight: 50 Kg

Dimensions: 1700 x 1400 x 1000cm

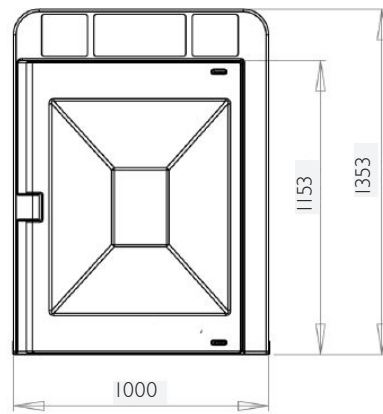
Colour: Green and Blue door.

Locks: 2 x Abus Padlocks

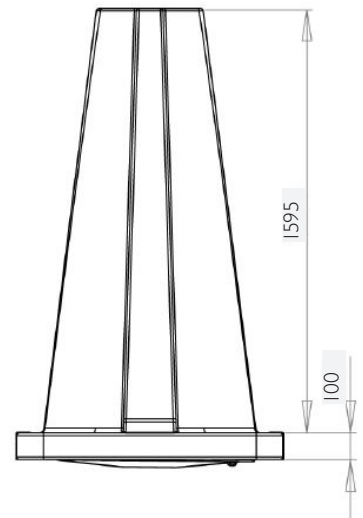
### Door Colour Options:

Green or Blue

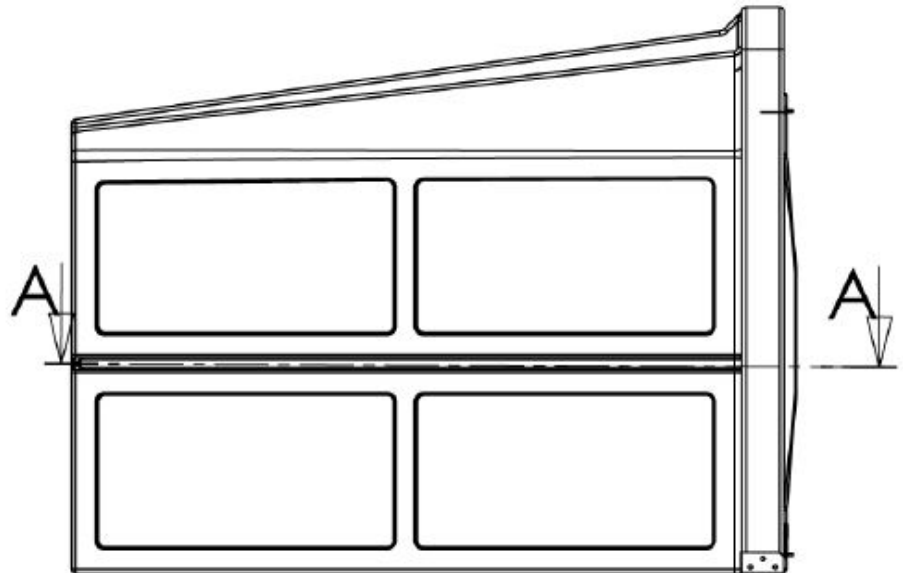
### Front View Dimensions



### Plan View Dimensions

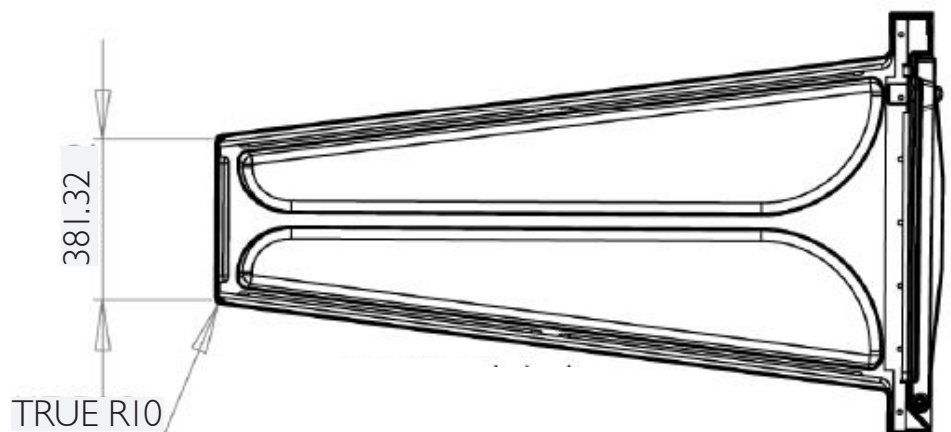


### Side View Dimensions



Section A-A Scale 1:20

### Underside View Dimensions



# LOCKERPOD

*Lockerpods* offer safety and security for your bike. If you're fed up with losing bits from your bike, getting a wet seat and dragging your helmet and bag around with you... *Lockerpods* are the answer!

Lockerpods feature double security. The door hasps are made of protected stainless steel tabs, drilled to accept padlocks. Internally it is designed so that a ground anchor can be installed to accept a D Lock or chain for additional security.

